



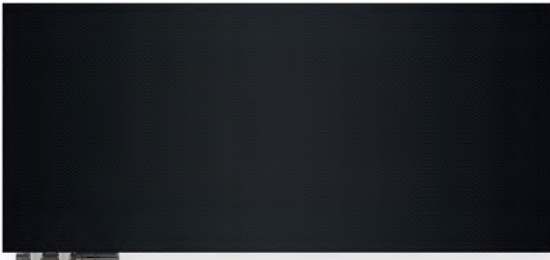
CASE SLIM

585 ↕ × 1100 ⇄ ZX | GRAPHICS: 132

Table of Contents

3.	BASIC
4.	QUOTES
5.	PATTERNS
6.	UNIVERSE
7.	LANDSCAPES
8.	NATURE
9.	ANIMALS
10.	LIFESTYLE
11.	FOR KIDS
12.	ABSTRACTION
14.	AUTOMOTIVE
15.	PLACES
16.	SPORT
17.	HOBBY
18.	Coding

CASE SLIM **BASIC**



001



002



003



004



005



006



007



008

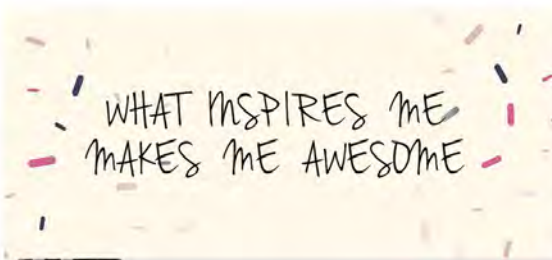
CASE SLIM QUOTES



009



010



011



012



013



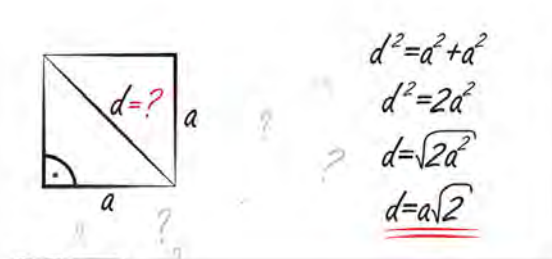
014



015



016



017

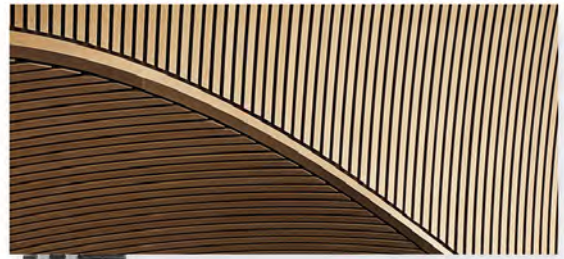


018

CASE SLIM PATTERNS



019



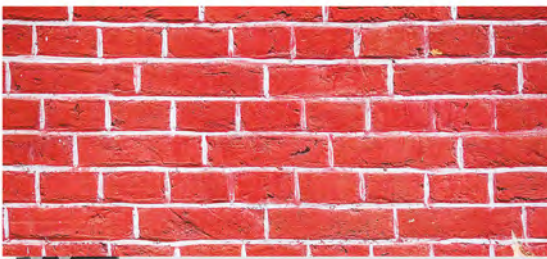
020



021



022



023



024



025



026

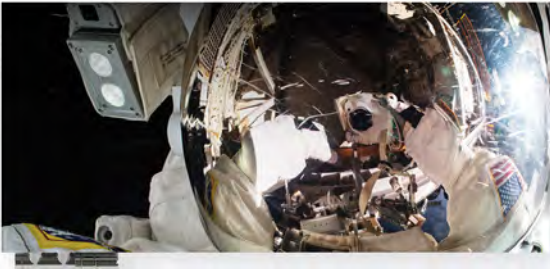


027

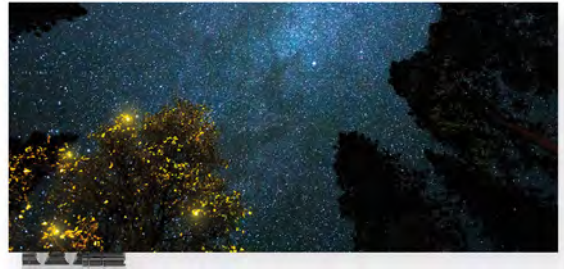


028

CASE SLIM **UNIVERSE**



029



030



031



032



033



034



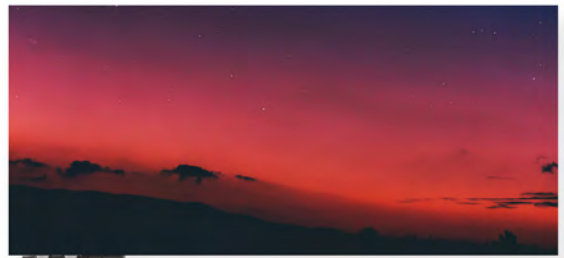
035



036



037



038

CASE SLIM **LANDSCAPES**



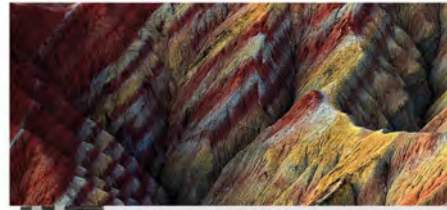
039



040



041



042



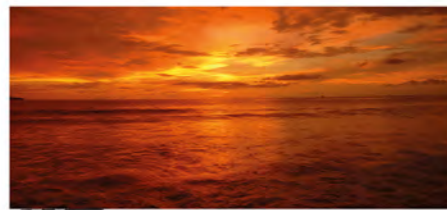
043



044



045



046



047



048



049



050

CASE SLIM **NATURE**



051



052



053



054



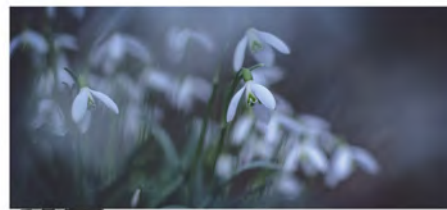
055



056



057



058



059



060



061



062

CASE SLIM **ANIMALS**



063



064



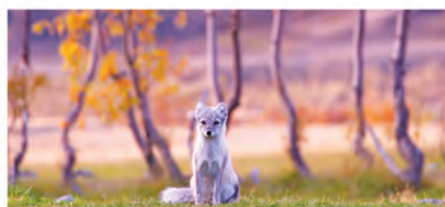
065



066



067



068



069



070



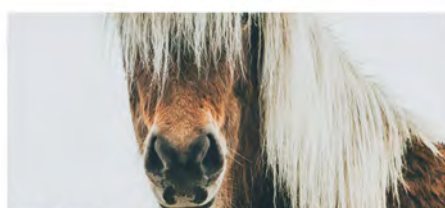
071



072



073



074

CASE SLIM **LIFESTYLE**



075



076



077



078



079



080



081



082



083



084

CASE SLIM FORKIDS



085



086



087

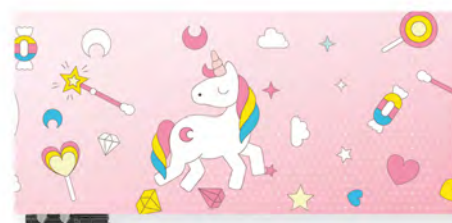


088

Tabliczka mnożenia

	grupa 1	grupa 2	grupa 3	grupa 4	grupa 5	grupa 6	grupa 7	grupa 8	grupa 9	grupa 10
grupa 1	1x1=1	1x2=2	1x3=3	1x4=4	1x5=5	1x6=6	1x7=7	1x8=8	1x9=9	1x10=10
grupa 2	2x1=2	2x2=4	2x3=6	2x4=8	2x5=10	2x6=12	2x7=14	2x8=16	2x9=18	2x10=20
grupa 3	3x1=3	3x2=6	3x3=9	3x4=12	3x5=15	3x6=18	3x7=21	3x8=24	3x9=27	3x10=30
grupa 4	4x1=4	4x2=8	4x3=12	4x4=16	4x5=20	4x6=24	4x7=28	4x8=32	4x9=36	4x10=40
grupa 5	5x1=5	5x2=10	5x3=15	5x4=20	5x5=25	5x6=30	5x7=35	5x8=40	5x9=45	5x10=50
grupa 6	6x1=6	6x2=12	6x3=18	6x4=24	6x5=30	6x6=36	6x7=42	6x8=48	6x9=54	6x10=60
grupa 7	7x1=7	7x2=14	7x3=21	7x4=28	7x5=35	7x6=42	7x7=49	7x8=56	7x9=63	7x10=70
grupa 8	8x1=8	8x2=16	8x3=24	8x4=32	8x5=40	8x6=48	8x7=56	8x8=64	8x9=72	8x10=80
grupa 9	9x1=9	9x2=18	9x3=27	9x4=36	9x5=45	9x6=54	9x7=63	9x8=72	9x9=81	9x10=90
grupa 10	10x1=10	10x2=20	10x3=30	10x4=40	10x5=50	10x6=60	10x7=70	10x8=80	10x9=90	10x10=100

089



090



091



092



093



094



095

CZASOWNIKI NIEREGLARNE

Grupa	1	2	3	4	5	6	7	8	9	10
1	1	2	3	4	5	6	7	8	9	10
2	1	2	3	4	5	6	7	8	9	10
3	1	2	3	4	5	6	7	8	9	10
4	1	2	3	4	5	6	7	8	9	10
5	1	2	3	4	5	6	7	8	9	10
6	1	2	3	4	5	6	7	8	9	10
7	1	2	3	4	5	6	7	8	9	10
8	1	2	3	4	5	6	7	8	9	10
9	1	2	3	4	5	6	7	8	9	10
10	1	2	3	4	5	6	7	8	9	10

096

CASE SLIM **ABSTRACTION**



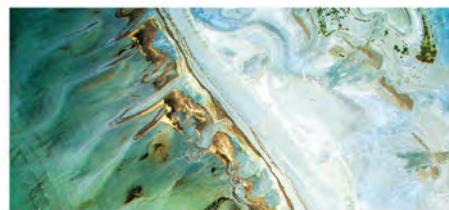
097



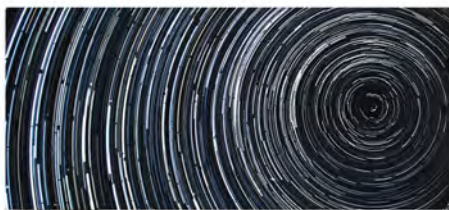
098



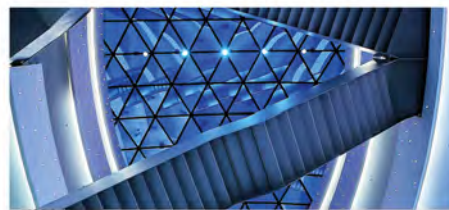
099



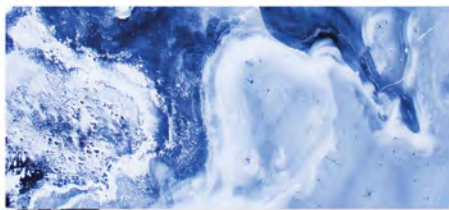
100



101



102



103



104



105



106



107



108

CASE SLIM **ABSTRACTION**



109



110



111



112



113



114



115



116

CASE SLIM **AUTOMOTIVE**



117



118



119



120



121



122



123



124



125



126

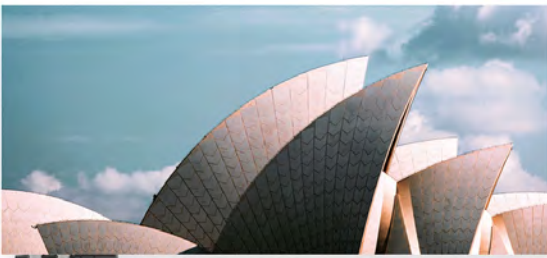
CASE SLIM **PLACES**



127



128



129



130



131



132



133



134



135



136

CASE SLIM **SPORT**



137



138



139



140



141



142



143



144



145

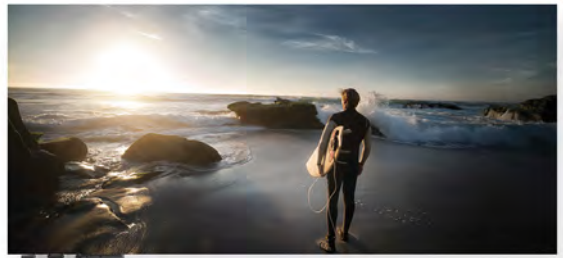


146

CASE SLIM **HOBBY**



147



148



149



150



151



152



153



154



155



156

CODING

Product codes can be found in product data sheet tables. When placing an order, product codes should include the fully completed configuration part. The configuration code part should be placed after the main product code.

The main product code and configuration part will appear as shown in the example below.

Offered patterns refer to the radiator Case Slim with following dimensions A ↓ 585mm.

CONFIGURATION CODE FOR CASE SLIM GLASS OR GRAPHIC MASKING FRONT (PRODUCT GROUP „WRB”)

PRODUCT CODE
(found next to the product in the table)

WRBCSP136042

product name: WRBCSP
product width: 136
product height: 042

CONFIGURATION CODE
(complemented manually)

K916X00E

Packaging code: K – carton box
Colour code: 916 p. 19–21
Artwork Nr: X00 p. 3–17
E: epoxy primer

CONFIGURATION CODE FOR A TOWEL RAIL OR RADIATOR („WG” PRODUCT GROUP)

WGCSG136042

K916SX E

Packaging code: K – carton box, L – pallet
Colour code: 916 p. 19–21
Connection code: SX p. 22
E: epoxy primer

A CONFIGURATION CODE FOR AN ELECTRIC TOWEL RAIL OR RADIATOR FILLED WITH OIL AND FITTED WITH A HEATING ELEMENT (PRODUCT GROUP „WL”)

WLCSG136042

K916E1DRYME1

Packaging code: K – carton box
Colour code: 916 p. 19–21
Connection code: E1 p. 22
Heating element model code: DRY
Cable type code: M p. 23
Heating element colour code: E1
0 - in the colour of the radiator*
1 - white
2 - black
3 - chrome
4 - silver
5 - gold
X - TS1, TS2

*0 – applies to ONE heating element only.

1-5 – applies to all heating elements except ONE and SIM/SIS models

In case of radiators with SIM/SIS heating element.**

the last character of the configuration code determines the color of the cable: 1 – white, 4 – silver

**** The SIS kit is not available with the gray cable**

- WRB – case slim glass or graphic masking front
- WG – water or dual fuel, central heating radiator
- WL – electric towel rail or radiator filled with Oil and fitted with a factory installed heating element
- E – the epoxy primer (additional coating increases the corrosion resistance of the product)

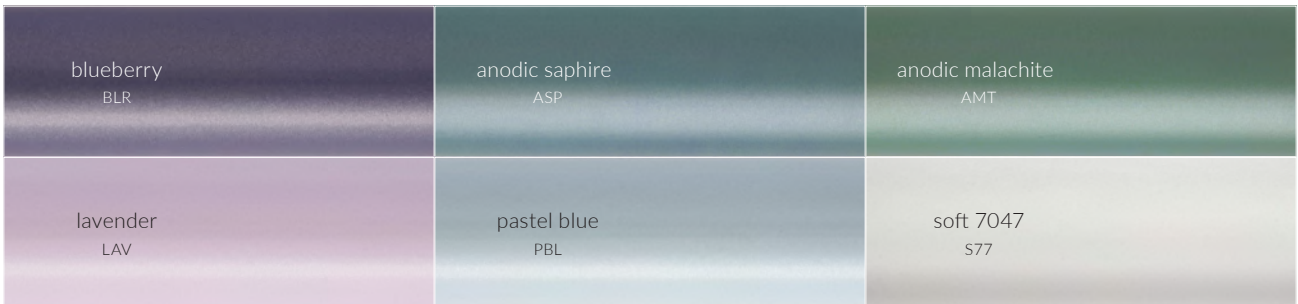
RAL COLOURS PALETTE

Presented colours may vary from the actual colour finishes. In order to select the exact colour that is required, **please use our Special Colour Palette** that is available for viewing at your local distributor of Terma or Terma sales managers.

RAL:	1000	1001	1002	1003	1004	1005	1006	1007	1011	1012	1013	1014	1015	1016
KOD:	100	101	102	103	104	105	106	107	111	112	113	114	115	116
1017	1018	1019	1020	1021	1023	1024	1027	1028	1032	1033	1034	1037	2000	2001
117	118	119	120	121	123	124	127	128	132	133	134	137	200	201
2002	2003	2004	2008	2009	2010	2011	2012	3000	3001	3002	3003	3004	3005	3007
202	203	204	208	209	210	211	212	300	301	302	303	304	305	307
3009	3011	3012	3013	3014	3015	3016	3017	3018	3020	3022	3027	3028	3031	4001
309	311	312	313	314	315	316	317	318	320	322	327	328	331	401
4002	4003	4004	4005	4006	4007	4008	4009	4010	5000	5001	5002	5003	5004	5005
402	403	404	405	406	407	408	409	410	500	501	502	503	504	505
5007	5008	5009	5010	5011	5012	5013	5014	5015	5017	5018	5019	5020	5021	5022
507	508	509	510	511	512	513	514	515	517	518	519	520	521	522
5023	5024	6000	6001	6002	6003	6004	6005	6006	6007	6008	6009	6010	6011	6012
523	524	600	601	602	603	604	605	606	607	608	609	610	611	612
6013	6014	6015	6016	6017	6018	6019	6020	6021	6022	6024	6025	6026	6027	6028
613	614	615	616	617	618	619	620	621	622	624	625	626	627	628
6029	6032	6033	6034	7000	7001	7002	7003	7004	7005	7006	7008	7009	7010	7011
629	632	633	634	700	701	702	703	704	705	706	708	709	710	711
7012	7013	7015	7016	7021	7022	7023	7024	7026	7030	7031	7032	7033	7034	7035
712	713	715	716	721	722	723	724	726	730	731	732	733	734	735
7036	7037	7038	7039	7040	7042	7043	7044	7045	7046	7047	8000	8001	8002	8003
736	737	738	739	740	742	743	744	745	746	747	800	801	802	803
8004	8007	8008	8011	8012	8014	8015	8016	8017	8019	8022	8023	8024	8025	8028
804	807	808	811	812	814	815	816	817	819	822	823	824	825	828
9001	9002	9003	9004	9006	9007	9010	9011	9016	9017	9018				
901	902	903	904	906	907	910	911	916	917	918				

SPECIAL COLOURS PALETTE

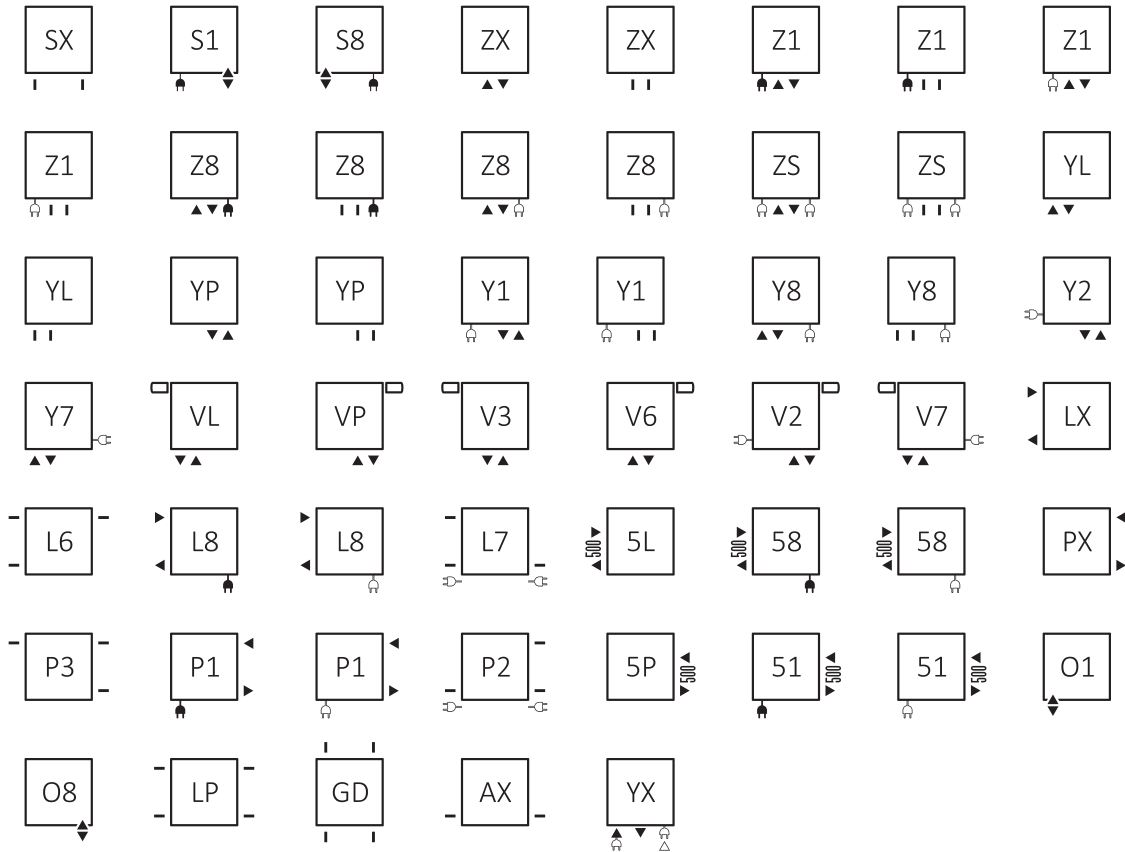
	Name: CODE:	
metallic black MBC	heban IHE	black pepper CPE
magic pearl MPR	black crocodile new BLN	anodic black ABC
soft 9005 S95	mat 9005 9M5	gloss 9005 9P5
sparkling grey RGY	metallic grey MGR	granite GRA
modern grey DGR	storm sky SSK	winter sky WSK
graphite GRP	salt & pepper SPP	inox INO
diamond silver DIS	silver gloss SPO	silver mat SMA
metallic silver MSI	metallic stone MST	sparkling gravel RGR
vibrant brown OVB	quartz QUA	metallic beige MBE
chrome effect CRE	Galvanic coating	chrome CRO



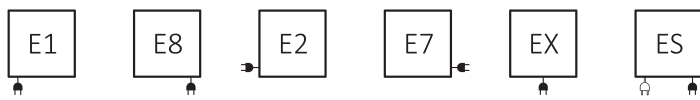
POSSIBLE CONNECTION SYMBOLS

In central heating and dual fuel towel rails and radiators, the symbol shows the method of water supply and return in a given connection and the positioning of a thermostatic insert and a heating element, if possible to install. For electric towel rails and radiators, the symbol indicates the possible electricity supply location.

CENTRAL HEATING AND DUAL FUEL RADIATOR AND TOWEL RAIL CONNECTIONS



ELECTRICAL RADIATOR AND TOWEL RAIL CONNECTIONS



TYPES OF CABLES AND THEIR CODES

codes	cable types	the symbol	I Class	II Class
W	STRAIGHT CABLE WITH PLUG		☑	☑
U	SPIRAL CABLE WITH PLUG		☑	
R	STRAIGHT CABLE WITH PLUG, WITH ON/OFF SWITCH		☑	☑
T	SPIRAL CABLE WITH PLUG WITH ON/OFF SWITCH		☑	
C	STRAIGHT CABLE WITH SWISS PLUG		☑	☑
P	STRAIGHT CABLE, NO PLUG		☑	☑
F	STRAIGHT CABLE, NO PLUG, WITH FIL - PILOTE WIRE			☑
M	STRAIGHT CABLE, NO PLUG WITH MASKING COVER		☑	☑
S	NO CABLE, HIDDEN CONNECTION WITH MASKING COVER 35 mm		☑	☑
L	NO CABLE, HIDDEN CONNECTION WITH MASKING COVER 40 mm		☑	☑

termaheat.com